

Mogo Zoo Curriculum-based Program for School Excursion

Stage 1: Hot & Cold Environments



**MOGO
ZOO**

Stage 1: Hot & Cold Environments

Stage 1: Hot and Cold Environments

For Teachers:

This document contains a series of worksheets that relate to the following NSW Science & Technology K-6 syllabus Learning Outcomes for Stage 1:

Knowledge & Understanding: Content	Knowledge & Understanding: Learning Process	Skills
Living Things: <ul style="list-style-type: none">all living things are different. Physical Phenomena: <ul style="list-style-type: none">some things feel hotter and some things feel colder than our bodies.	Students will develop their knowledge and understanding of the process of investigation that people use to develop reliable insights into the natural and made environments.	Students will be able to investigate natural and made environments.

How to use this document:

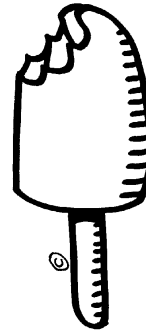
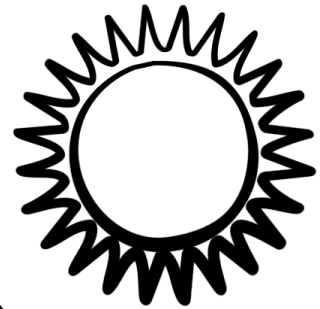
- This document provides a variety of worksheets that relate to topic of Hot & Cold Environments.
- You may choose to use all or some of the worksheets.
- It is suggested that some worksheets be completed prior to you visit to Mogo Zoo.
- Animal related worksheets are designed to be completed during your visit to Mogo Zoo.
- Depending on the reading level of the students, you may choose to read aloud the instructions on the worksheets.
- You may choose to attend the Keeper Talks beginning daily at 10:30am and 1:45pm.
- All school excursion bookings include a private zookeeper talk about an animal of your choice from Mogo Zoo's collection. Please select from the Mogo Zoo species list (included) and notify Mogo Zoo staff of your selection at the time of booking.
- **For bookings or enquiries, contact Tim Leach on (02) 4474 4930.**
- If you would like more background information on a specific species, please contact Tim Leach on (02) 4474 4930.

List of Species At Mogo Zoo

- Red-Tail Boa Constrictor– *Boa constrictor constrictor*
- Burmese Python – *Python molurus bivittatus*
- Carpet Python - *Morelia spilota mcdowelli*
- Green Iguana – *Iguana iguana*
- Rhinoceros Iguana – *Cyclura cornuta*
- Red Panda – *Ailurus fulgens*
- Serval – *Leptailurus serval*
- Oriental Small-Clawed Otter – *Aonyx cinerea*
- Pygmy Marmoset – *Calithrix pygmaea*
- Cotton-Top Tamarin – *Saguinus Oedipus*
- Golden-Lion Tamarin – *Leontopithecus rosalia*
- Fennec Fox – *Vulpes zerda*
- Meerkat – *Suricata suricatta*
- Emperor Tamarin – *Saguinus imperator*
- Snow Leopard – *Uncia uncia*
- Sumatran Tiger – *Panthera tigris sumatrae*
- African Lion – *Panther Leo*
- Lar Gibbon – *Hylobates lar*
- De Brazza's Monkey – *Cercopithecus neglectus*
- Silvery Gibbon – *Hylobates mooch*
- Fallow Deer – *Dama Dama*
- Eastern Grey Kangaroo – *Macropus giganteus*
- White Lion – *Panthera Leo*
- Giraffe – *Giraffa camelopardalis*
- Plains Zebra – *Equus quagga*
- Ostrich – *Struthio camelus*
- Chimpanzee – *Pan troglodytes*
- Brazilian Tapir – *Tapirus terrestris*
- Ring-Tailed Lemur – *Lemur catta*
- Black and White Ruffed Lemur – *Varecia variegata variegata*
- Spider Monkey – *Ateles geoffroyi*
- Siamang – *Hylobates syndactylus*
- Green Tree Frog (Dumpy treefrog) – *Litoria caerulea*
- Yellow-and-blue poison dart Frog – *Dendrobates tinctorus*
- White-lipped Tree Frog (Giant Tree Frog) – *Litoria intrafrenata*

Is it Hot or Cold?

Colour the hot things **red** and the cold things **blue**.



Draw pictures of some hot things and cold things you can find in your school environment.

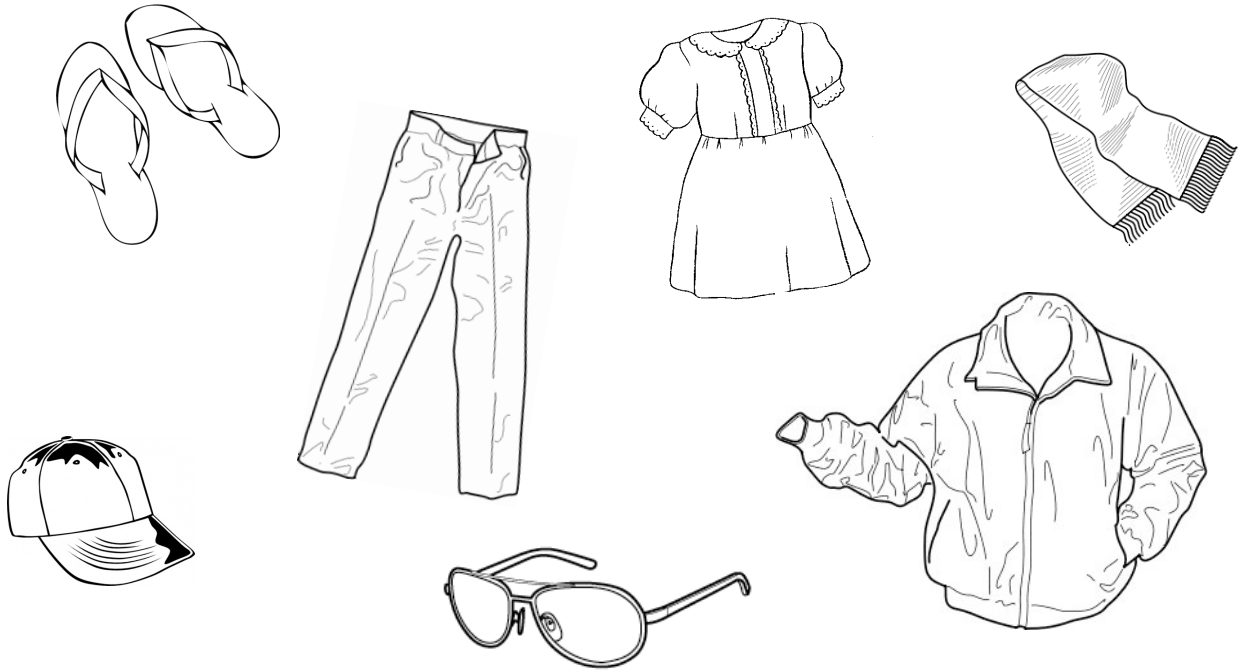
These things are hot.

These things are cold.

Name:

Humans use clothes to cover themselves and for protection from hot and cold environments.

Colour **red** the clothes you would wear in hot weather; colour **blue** the clothes you would wear in cold weather.



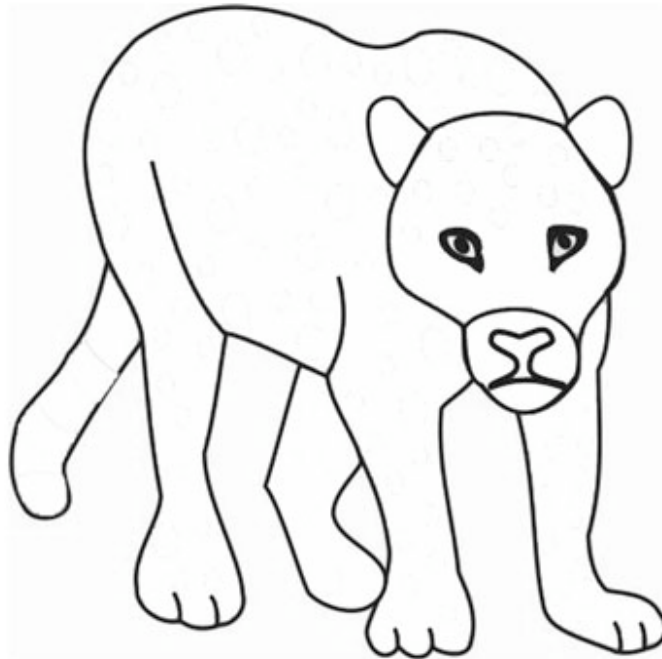
Draw a picture of a hot environment and a cold environment.

Hot environment

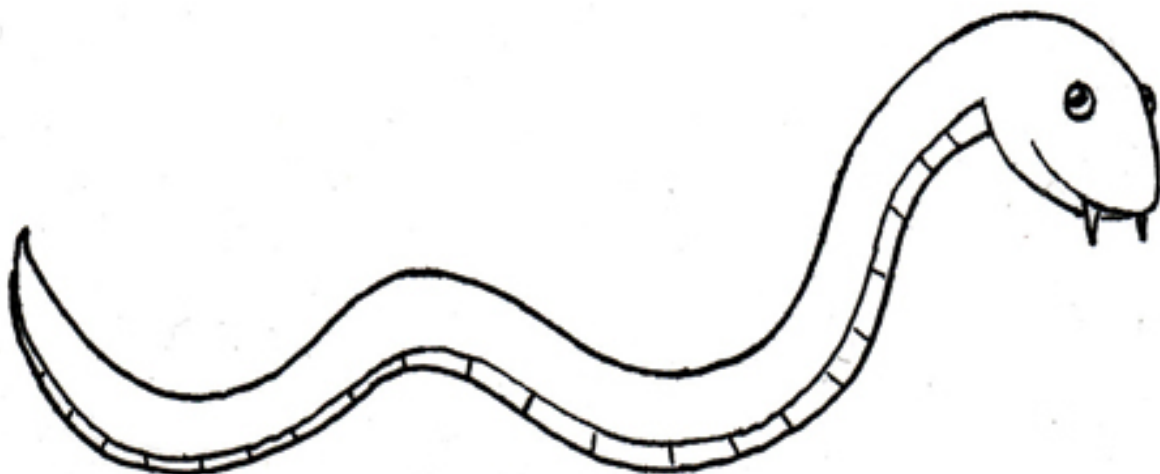
Cold environment

Animals have body coverings, such as, fur, feathers and scales, for protection from hot and cold environments.

Visit the snow leopard enclosure at Mogo Zoo. Draw the fur coat on the snow leopard below to protect it from the cold environment.

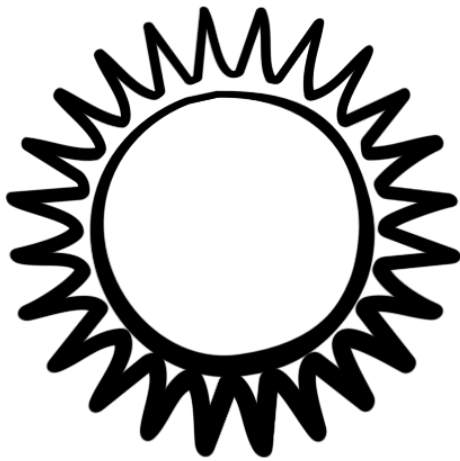


Visit the reptile house at Mogo Zoo. Draw the scales on the python below protect it from the hot environment.

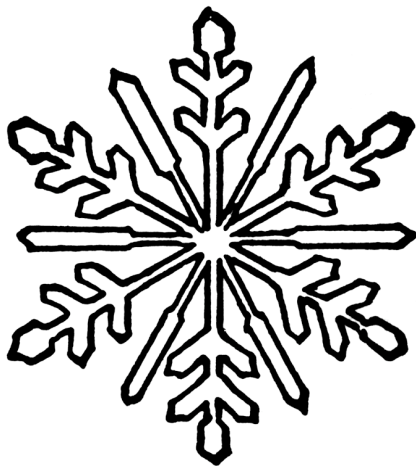


Some wild animals live in hot environments and some wild animals live in cold environments.

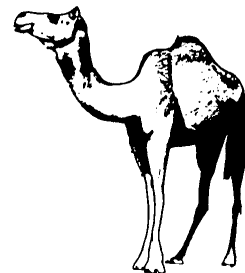
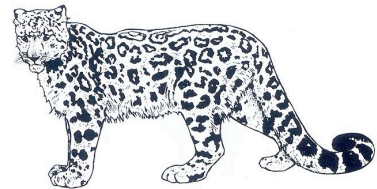
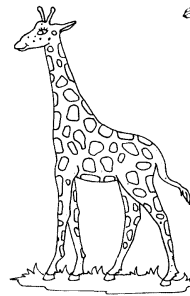
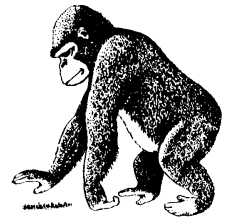
Draw lines to match the animals that live in hot and cold environments.



HOT



COLD



Name:

The animals at Mogo Zoo come from all over the planet and from hot and cold environments. Now they live at the zoo in captivity so you can learn about them.

Draw an animal that you saw at Mogo Zoo that is not from Australia.

Draw an animal that you saw at Mogo Zoo that is found in the wild in Australia. (Hint: you may need to look outside of the enclosures).

Australia has many animals that can survive in the hot environment.

Connect the dots to find out who lives in Australia. Then colour this animal's fur.

